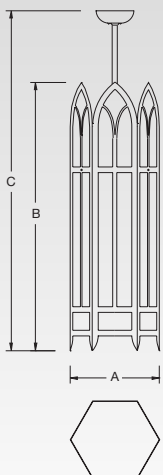




Canterbury

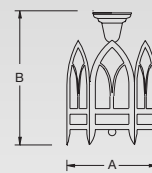
G-80001-F1-S-L-4-108

PENDANTS



	A	B	C	Weight
G-80000	12"	30"	92"	lbs 22
	305	762	2337	kg 10
G-80001	12"	36"	108"	lbs 26
	305	914	2743	kg 12
G-80002	16"	36"	108"	lbs 32
	406	914	2743	kg 15
G-80003	16"	40"	112"	lbs 37
	406	1016	2845	kg 17
G-80004	20"	40"	112"	lbs 41
	508	1016	2845	kg 19
G-80005	20"	44"	116"	lbs 41
	508	1118	2946	kg 21

FLUSH MOUNTED



	A	B	Weight
G-80020	12"	18"	lbs 17
	305	457	kg 8
G-80021	16"	20"	lbs 20
	305	508	kg 9
G-80022	20"	22"	lbs 24
	406	559	kg 11

Lamping

		Pendants				Flush Mounted					
Incandescent	Lamp Base	Code	80000	80001	80002	80003	80004	80005	80020	80021	80022
1-100 A-19	Medium	A	•	•	•	•	•	•	•	•	•
2-75 A-19	Medium	B	•	•	•	•	•	•	•	•	•
3-60 A-19	Medium	C	•	•	•	•	•	•	•	•	•
2-60 A-19 UP	Medium	D	•	•	•	•	•	•	•	•	•
1R-40 200 Down	Medium										
3-60 A-19 UP	Medium	T	•	•	•	•	•	•	•	•	•
1 R-40 200 Down	Medium										
3-75 A-19 UP	Medium	E	•	•	•	•	•	•	•	•	•
1R-40 500 Down	Mogul										
6-75 A-19 UP	Medium	F	•	•	•	•	•	•	•	•	•
1R-40 500 Down	Mogul										
3-100 A-19 UP	Medium	G			•	•	•	•	•	•	•
1R-40 500 Down	Mogul										
6-100 A-19 UP	Medium	H			•	•	•	•	•	•	•
1R-40 500 Down	Mogul										
Fluorescent											
1 CFQ26	G24q-3	I	•	•	•	•	•	•	•	•	•
1 CFTR32	GX24q-3	J	•	•	•	•	•	•	•	•	•
1 CFTR42	GX24q-4	K	•	•	•	•	•	•	•	•	•
2 CFQ26	G24q-3	L	•	•	•	•	•	•	•	•	•
2 CFTR32	GX24q-3	M	•	•	•	•	•	•	•	•	•
2 CFTR42	GX24q-4	N	•	•	•	•	•	•	•	•	•
2 CFQ26 Up	G24q-3	O	•	•	•	•	•	•	•	•	•
1R-40 200 Down	Medium										
4 CF36/39	2G11	U			•	•	•	•	•	•	•
1 R-40 200 Down	Medium										
3 CFQ26 Up	G24q-3	P	•	•	•	•	•	•	•	•	•
1R-40 500 Down	Mogul										
4 CF36/39	2G11	V			•	•	•	•	•	•	•
1 R-40 500 Down	Mogul										
4 CF40 Up	2G11	Q			•	•	•	•	•	•	•
1R-40 500 Down	Mogul										
3 CFQ26 Up	G24q-3	R									
1R-52 750 Down	Mogul		750W no longer available. Use lamp code P.								
4 CF36/39	2G11	W									
1 R-52 750 Down	Mogul		750W no longer available. Use lamp code V.								
4 CF40 Up	2G11	S									
1R-52 750 Down	Mogul		750W no longer available. Use lamp code O.								
			CF36/39 Lamp M.O.L. 16 1/2" long								
			CF40 Lamp M.O.L. 22 1/2" long								
			NOTE: 750W downlight no longer available.								

Please state voltage. See Code.Code: 1 120 volts
 2 277 volts

Lenses

	CODE
White Opal	W
Satin White	S
Faux Alabaster	F
Earth Marble	M
Faux Mica	L
Art Glass*	A

*This will be quoted on a case by case basis.
 Please consult factory.

Finishes

Standard Painted Finishes	Code		Code
Satin Black	A	Light Bronze	G
Reflector White	B	Dark Bronze	H
Painted Aluminum	C	Painted Antique Brass	I
New Satin Nickel	D	Gray Granite	J
Faux Rust	E	Powdercoat Verde	K
Beige	F	Sungold	L
Standard Metallic Finishes			
Polished Brass	M	Antique Brass	O
Satin Brass	N	Brushed Aluminum	P
Premium Finishes (Check with factory for price & availability)			
Polished Nickel	Q	Satin Chrome	U
Satin Nickel	R	Flemish Brass	V
Antique Nickel	S	Polished Copper	W
Polished Chrome	T	Antique Copper	X
		Oil Rubbed Bronze	Y

Options

All ballasts are high power factor electronic.
 Multi-circuiting is available. Consult factory for combinations and pricing.

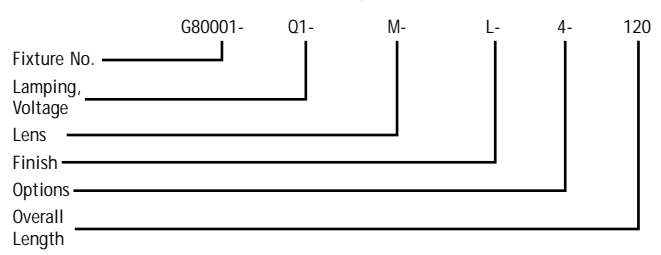
Code

- 1 Integral Dimming Ballasts
- 2 Emergency Ballasts-Available for fluorescent fixtures, remotely mounted
- 3 Separate Circuits for Up Lights and Down Lights
- 4 No Options Needed

How To Specify

To specify a 12" diameter, 36" tall Canterbury Pendant with 4 CF40 Lamps Up and 1 500 Watt R40 Downlight, 120 Volt, Earth Marble Lenses, Painted Powdercoat Sungold Finish, No Options Needed, 120" Overall Length:

G80001-Q1-M-L-4-120



Matching Fixtures: Contact factory.

DOWNLIGHTING AND CLUSTER ARRANGEMENTS ARE ALSO AVAILABLE IN OUR DOME AND CONE SERIES OF FIXTURES. PLEASE CONSULT FACTORY FOR DETAILS.

Contact factory for photometrics. These G Lighting products are Union made and E.T.L./C.S.A. listed. G Lighting reserves the right to modify existing designs to improve appearance or function.