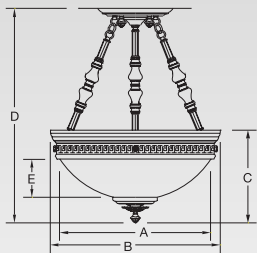




Overture

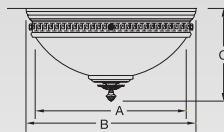
G-10093-F1-F-AM-G-8-038

PENDANTS



		A	B	C	D	E	Weight
G-10091	in	18"	23"	13 ³ / ₈ "	29"	5 ¹ / ₂ "	lbs 18
	mm	457	584	340	737	140	kg 8
G-10092	in	24"	27"	15"	34"	6 ¹ / ₂ "	lbs 23
	mm	610	686	381	864	165	kg 10
G-10093	in	30"	34"	16"	38"	7 ¹ / ₂ "	lbs 34
	mm	762	864	406	965	191	kg 15
G-10094	in	38"	44 ¹ / ₄ "	17 ¹ / ₄ "	42"	9"	lbs 42
	mm	965	1251	438	1067	229	kg 19
G-10095	in	45"	50"	19 ¹ / ₂ "	46"	11"	lbs 57
	mm	1143	1270	495	1168	279	kg 26
G-10096	in	55"	61 ³ / ₈ "	22 ¹ / ₂ "	50"	14"	lbs 72
	mm	1397	1559	572	1270	356	kg 33

FLUSH MOUNTED



		A	B	C	Weight
G-10098	in	18"	23"	13 ³ / ₈ "	lbs 11
	mm	457	584	330	kg 5
G-10099	in	24"	27"	15"	lbs 15
	mm	610	686	381	kg 7
G-10100	in	30"	34"	16"	lbs 26
	mm	762	864	406	kg 12
G-10101	in	38"	44 ¹ / ₄ "	17 ¹ / ₄ "	lbs 34
	mm	965	1251	438	kg 15
G-10102	in	45"	50"	19 ¹ / ₂ "	lbs 44
	mm	1143	1270	495	kg 20
G-10103	in	55"	61 ³ / ₈ "	22 ¹ / ₂ "	lbs 55
	mm	1397	1559	572	kg 25

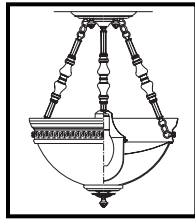
Lamping

	Incandescent	Lumens	Lamp Base	Code	Pendants					Flush Mounted							
					Bowl Diameter					Bowl Diameter							
					18	24	30	38	45	55	18	24	30	38	45	55	
Incandescent																	
	3-60 A-19	2,565	Medium	A	•	•	•	•	•	•	•	•	•	•	•	•	•
	6-60 A-19	5,130	Medium	B	•	•	•	•	•	•	•	•	•	•	•	•	•
	3-100 A-19	4,950	Medium	C	•	•	•	•	•	•	•	•	•	•	•	•	•
	6-100 A-19	9,900	Medium	D	•	•	•	•	•	•	•	•	•	•	•	•	•
	3-150 A-21	6,507	Medium	E	•	•	•	•	•	•	•	•	•	•	•	•	•
	6-150 A-21	13,014	Medium	F	•	•	•	•	•	•	•	•	•	•	•	•	•
	3-200 A-21	8,595	Medium	G	•	•	•	•	•	•	•	•	•	•	•	•	•
	6-200 A-21	17,190	Medium	H	•	•	•	•	•	•	•	•	•	•	•	•	•
	3-300 PS30	18,300	Medium	I	•	•	•	•	•	•	•	•	•	•	•	•	•
	6-300 PS30	36,600	Medium	J	•	•	•	•	•	•	•	•	•	•	•	•	•
Fluorescent																	
	2 CFQ13	1,530	G24q-1 4 Pin	K	•	•	•	•	•	•	•	•	•	•	•	•	•
	4 CFQ13	3,060	G24q-1 4 Pin	L	•	•	•	•	•	•	•	•	•	•	•	•	•
	4 CFQ26	5,840	G24q-3 4 Pin	M	•	•	•	•	•	•	•	•	•	•	•	•	•
	8 CFQ26	11,680	G24q-3 4 Pin	N	•	•	•	•	•	•	•	•	•	•	•	•	•
	3-CF36/39	7,530	2G11 4 Pin	O	•	•	•	•	•	•	•	•	•	•	•	•	•
	4-CF36/39	10,040	2G11 4 Pin	P	•	•	•	•	•	•	•	•	•	•	•	•	•
	6-CF36/39	15,060	2G11 4 Pin	Q	•	•	•	•	•	•	•	•	•	•	•	•	•
	9-CF36/39	22,590	2G11 4 Pin	R	•	•	•	•	•	•	•	•	•	•	•	•	•
	8-CF50	27,200	2G11 4 Pin	S	•	•	•	•	•	•	•	•	•	•	•	•	•
	10-CF50	34,000	2G11 4 Pin	T	•	•	•	•	•	•	•	•	•	•	•	•	•
	CF36/39 lamp M.O.L. 16 1/2" long																
Metal Halide Only available with hanger G or H																	
	1-175 ED-28	8,380	Mogul	U	•	•	•	•	•	•	•	•	•	•	•	•	•
	1-250 ED-28	11,300	Mogul	V	•	•	•	•	•	•	•	•	•	•	•	•	•
	1-400 ED-28	22,700	Mogul	W	•	•	•	•	•	•	•	•	•	•	•	•	•

Please state voltage. See Code. Code: 1 120 volts
2 277 volts

Metal Halide

The reflector for our metal halide fixtures is finished with a highly reflective white powdercoat finish, which is also easy to maintain.



Ballasts are encased and potted, thermally protected with dual taps for 120 or 277 volts. Usually the ballast is mounted in a remote location. In the event this is not possible, the ballast may be mounted in specially designed, decorative traditional or contemporary canopies appropriate to the fixture style.

Acrylic Bowls

	CODE		CODE
White Opal	W	Satin White	S
Faux Alabaster	F	Earth Marble	M

Finishes

45" and 55" bowl diameter fixtures available in painted finish or Brushed Aluminum only.

Standard Painted Finishes	Code		Code
Satin Black	A	Light Bronze	G
Reflector White	B	Dark Bronze	H
Painted Aluminum	C	Painted Antique Brass	I
New Satin Nickel	D	Gray Granite	J
Faux Rust	E	Light Verdigris	K
Beige	F	Sungold	L
Standard Metallic Finishes			
Polished Brass	M	Antique Brass	O
Satin Brass	N	Brushed Aluminum	P
Premium Finishes (Check with factory for price & availability)			
Polished Nickel	Q	Satin Chrome	U
Satin Nickel	R	Flemish Brass	V
Antique Nickel	S	Polished Copper	W
Polished Chrome	T	Antique Copper	X
		Oil Rubbed Bronze	Y

Hangers

A Flat Ceiling
B Sloped Ceiling
C Flat Ceiling
D Sloped Ceiling

E Flat Ceiling
F Sloped Ceiling
G Flat Ceiling
H Sloped Ceiling

For Sloped Ceilings

For lengths longer than 60" this method of hanging will be used with standard length stems

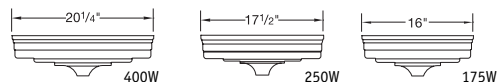
Custom lengths are available. Consult price sheet for added or shortened length.

Options

All ballasts are high power factor electronic
 Multi-circuiting is available. Consult factory for combinations and pricing.

Code

- Delete Finial
- Add Staves to Bowl
- Integral Dimming Ballasts
- Emergency Ballasts-Available for fluorescent fixtures. Integral to operate 2 lamps in 30" bowls and above. All others remotely mounted. Only available with sloped ceiling hanger.
- White Opal Top Lens (not available with Metal Halide)
- 5A Clear Top Lens (not available with Metal Halide)
- 150 Watt Quartz Restrike for Metal Halide (Only available with hanger G or H)
- Surface Mounted Metal Halide Ballast Canopy



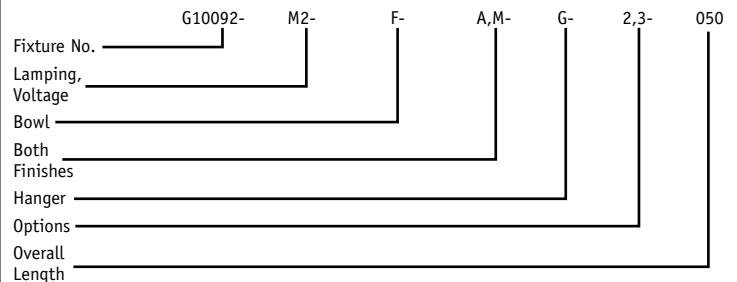
- No Options Needed

Matching Fixtures: Overture Family of Scones, Dorset Heritage ADA Sconce

How To Specify

Specify two finishes. 1st the base finish, 2nd the trim finish. To specify a 24" diameter bowl Overture Pendant with 4-26 Watt Compact Fluorescent Lamping, 277 volts, Faux Alabaster Bowl, Satin Black Base Finish, Polished Brass Trim Finish, Angled Stem Hangers, Flat Ceiling, Staves on Bowl, Dimming Ballasts, 50" Overall Length:

G10092-M2-F-AM-G-23-050



Note: Two finishes must be specified even if single finish is desired-IE. All Antique Brass Finish-00.