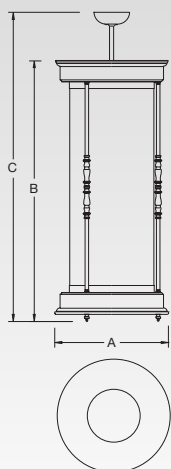




Wren

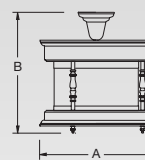
G-80042-E1-W-H-8-108

PENDANTS



		A	B	C	Weight
G-80040	in	12"	25"	97"	lbs 21
	mm	305	635	2464	kg 10
G-80041	in	14"	25"	97"	lbs 25
	mm	356	635	2464	kg 11
G-80042	in	14"	34"	106"	lbs 28
	mm	356	864	2692	kg 13
G-80043	in	16"	32"	104"	lbs 30
	mm	406	737	2565	kg 14
G-80044	in	16"	37"	109"	lbs 35
	mm	406	940	2769	kg 16

FLUSH MOUNTED



		A	B	Weight
G-80060	in	12"	15"	lbs 15
	mm	305	381	kg 7
G-80061	in	14"	15"	lbs 17
	mm	356	381	kg 8
G-80062	in	16"	15"	lbs 19
	mm	406	381	kg 9

Lamping

Pendants Flush Mounted

Incandescent	Lamp Base	Code	80040	80041	80042	80043	80044	80060	80061	80062
1-100 A-19	Medium	A	•	•	•	•	•	•	•	•
2-75 A-19	Medium	B	•	•	•	•	•	•	•	•
3-60 A-19	Medium	C	•	•	•	•	•	•	•	•
2-60 A-19 UP	Medium	D	•	•	•	•	•	•	•	•
1R-40 200 Down	Medium									
3-60 A-19 UP	Medium	T	•	•	•	•	•	•	•	•
1 R-40 200 Down	Medium									
3-75 A-19 UP	Medium	E	•	•	•	•	•	•	•	•
1R-40 500 Down	Mogul									
6-75 A-19 UP	Medium	F	•	•	•	•	•	•	•	•
1R-40 500 Down	Mogul									
3-100 A-19 UP	Medium	G	•	•	•	•	•	•	•	•
1R-40 500 Down	Mogul									
6-100 A-19 UP	Medium	H	•	•	•	•	•	•	•	•
1R-40 500 Down	Mogul									
Fluorescent										
1 CFQ26	G24q-3	I	•	•	•	•	•	•	•	•
1 CFTR32	GX24q-3	J	•	•	•	•	•	•	•	•
1 CFTR42	GX24q-4	K	•	•	•	•	•	•	•	•
2 CFQ26	G24q-3	L	•	•	•	•	•	•	•	•
2 CFTR32	GX24q-3	M	•	•	•	•	•	•	•	•
2 CFTR42	GX24q-4	N	•	•	•	•	•	•	•	•
2 CFQ26 Up	G24q-3	O	•	•	•	•	•	•	•	•
1R-40 200 Down	Medium									
4 CF36/39	2G11	U	•	•	•	•	•	•	•	•
1 R-40 200 Down	Medium									
3 CFQ26 Up	G24q-3	P	•	•	•	•	•	•	•	•
1R-40 500 Down	Mogul									
4 CF36/39	2G11	V	•	•	•	•	•	•	•	•
1 R-40 500 Down	Mogul									
4 CF40 Up	2G11	Q	•	•	•	•	•	•	•	•
1R-40 500 Down	Mogul									
3 CFQ26 Up	G24q-3	R	•	•	•	•	•	•	•	•
1R-52 750 Down	Mogul	750W no longer available. Use lamp code P.								
4 CF36/39	2G11	W	•	•	•	•	•	•	•	•
1 R-52 750 Down	Mogul	750W no longer available. Use lamp code V.								
4 CF40 Up	2G11	S	•	•	•	•	•	•	•	•
1R-52 750 Down	Mogul	750W no longer available. Use lamp code Q.								
CF36/39 Lamp M.O.L. 16 1/2" Long										
CF40 Lamp M.O.L. 22 1/2" Long										
NOTE: 750W downlight no longer available.										

Please state voltage. See Code.Code: 1 120 volts
 2 277 volts

Options


All ballasts are high power factor electronic.


Multi-circuiting is available. Consult factory for combinations and pricing.


Code


- 1 Integral Dimming Ballasts
- 2 Emergency Ballasts-Available for fluorescent fixtures, remotely mounted
- 3 Separate Circuits For Up And Down Light

Symbols

4  1/2" Solid Aluminum or Brass Barstock

5  Laser Cut Sheet Metal

6  Laser Cut Sheet Metal

7  Laser Cut Sheet Metal

8 No Options Needed

Acrylic

CODE

White Opal	W
Satin White	S

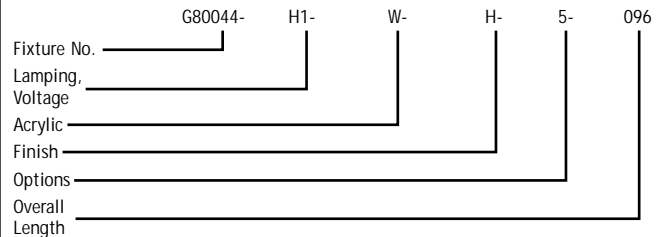
Finishes

Standard Painted Finishes	Code	Code	
Satin Black	A	Light Bronze	G
Reflector White	B	Dark Bronze	H
Painted Aluminum	C	Painted Antique Brass	I
New Satin Nickel	D	Gray Granite	J
Faux Rust	E	Powdercoat Verde	K
Beige	F	Sungold	L
Standard Metallic Finishes			
Polished Brass	M	Antique Brass	O
Satin Brass	N	Brushed Aluminum	P
Premium Finishes (Check with factory for price & availability)			
Polished Nickel	Q	Satin Chrome	U
Satin Nickel	R	Flemish Brass	V
Antique Nickel	S	Polished Copper	W
Polished Chrome	T	Antique Copper	X
		Oil Rubbed Bronze	Y

How To Specify

To specify a 16" diameter, 37" tall Wren Pendant with 6 100W A-19 Lamps Up and 1 500 Watt R40 Downlight, 120 Volt, White Opal Acrylic Cylinder, Painted Dark Bronze Finish, Laser Cut Sheet Metal Cross, 96" Overall Length:

G80044-H1-W-H-5-096



Matching Fixtures: Contact factory.

DOWNLIGHTING AND CLUSTER ARRANGEMENTS ARE ALSO AVAILABLE IN OUR DOME AND CONE SERIES OF FIXTURES. PLEASE CONSULT FACTORY FOR DETAILS.

Contact factory for photometrics. These G Lighting products are Union made and E.T.L./C.S.A. listed. G Lighting reserves the right to modify existing designs to improve appearance or function.